



Community Impact Report

2025 - 2026

Culture of Care

This report highlights milestones and achievements of the past year at both St. Thomas Elgin General Hospital (STEGH) and the STEGH Foundation. These successes were made possible by the unwavering commitment of our dedicated staff, physicians, volunteers, and donors - and by the incredible support of the community we proudly serve.



Table of Contents

Leadership Letter:
Proud of Our People. Grateful for Our Community.
Page 4

Governance Letter:
Confidence in Our Future
Page 5

Expanding Services to Meet the Needs of Our Community
Page 6-7

Tiny Patients, Huge Impact:
Donors Advance Neonatal Care
Page 8

Statistics
Page 9

Investing in People, Strengthening Our Culture
Page 10

When Seconds Matter, Our Community Steps Up
Page 11

Financial Statements
Page 12-14

Community Champions
Page 15-16

For more information about **STEGH**
Serving the City of St. Thomas and the County of Elgin:



For more information about **STEGH Foundation**, ways to give,
or how to become a donor, please visit our website:



Leadership Letter

Proud of Our People. Grateful for Our Community.

This past year has been defined by resilience, compassion, and an unwavering commitment to the people we serve. In the face of escalating system pressures and growing demand, our care teams, physicians, staff, and volunteers have continued to show up for one another and for our patients with professionalism, integrity, and heart. Their collective focus on safe, high-quality care, paired with a willingness to innovate and problem-solve, has strengthened both our culture and our capacity to lead through change.

We are proud of the progress made across the organization, from advancing best-practice quality improvements and data-driven decision-making to responding to the complex needs of our population. This commitment to excellence is reflected in the expansion of innovative care services across our hospital. With the generous support of our donors, STEGH has enhanced access to specialized ophthalmology care, advanced breast imaging for earlier and more accurate detection, and expanded neonatal services to better support premature and vulnerable newborns. These investments are just some examples of how STEGH is transforming care close to home and ensuring families can access leading-edge services when they need them most.

Looking ahead, we are inspired by the opportunities before us. From embracing innovation and digital enablement to launching new fundraising initiatives and celebrating the Foundation's 40th Anniversary with our loyal supporters, the year ahead is filled with momentum and possibility. Together, we will continue to build meaningful connections and drive impact where it matters most.

**What continues to guide us is simple yet profound:
healthcare is deeply personal. Every decision, every
investment, and every act of generosity touches a life.**

To our care teams and donors, thank you. Your dedication and compassion make a lasting difference in the lives of others and reinforce STEGH's role in this very special community.



Karen Davies, STEGH President & CEO



Ryan Byrne, STEGH Foundation Executive Director



Governance Letter

Left to Right:
Rebecca Kapogiannis: Foundation Board Chair
Dan Ross: STEGH Board Chair
Karen Davies: STEGH President & CEO
Ryan Byrne: Foundation Executive Director

Confidence in Our Future

What continues to stand out at STEGH is the strength of our people. Across both the Hospital and Foundation, leaders, physicians, staff, volunteers, donors, and community members continue to work together with a shared commitment to excellence in care and service to others. Their willingness to collaborate, solve problems, and step forward when challenges arise speaks to the culture of our hospital and the values that continue to guide our organizations.

As Board Chairs, we are proud to support our hospital as it continues to lead with resilience, adaptability, and purpose in an increasingly complex healthcare environment. STEGH has earned a reputation as a high-performing hospital, supported by an equally committed Foundation and a community that believes deeply in the importance of local healthcare.

Looking ahead, we are confident in STEGH's ability to continue growing and evolving to meet the needs of our region. Through thoughtful leadership, innovation, and strong community support, the organization is well-positioned to sustain and strengthen care for patients and families across Elgin County for years to come. What continues to drive our commitment to this work is the shared sense of purpose seen across every level of the organization. Together, we remain focused on ensuring STEGH continues to be a place where people can access exceptional care close to home.

To everyone who supports STEGH and the Foundation, thank you. Your trust, generosity, and belief in these organizations continue to shape a strong and sustainable future for local care.

Dan Ross, STEGH Board Chair

Rebecca Kapogiannis, STEGH Foundation Board Chair

Expanding Services to Meet the Needs of Our Community

As the population of St. Thomas and Elgin County continues to grow, STEGH is focused on expanding services so more patients can receive the care they need close to home. Over the past year, several important service enhancements and clinical advancements have strengthened access to specialized care while improving the experience for patients and families across our region.

One significant milestone was the transition of our Neonatal Intensive Care Unit (NICU) to a Level 2B designation, allowing pregnant women at 32 weeks and six days gestation or later to deliver locally rather than travelling outside the community. This enhancement means more families can remain close to home during a critical time, while newborns who require additional support can receive specialized care from STEGH's dedicated neonatal team.

(See page 8 to learn more about donor impact.)

Cancer care has also expanded with systemic therapy services now available five days a week, improving access for patients who require ongoing treatment and reducing delays in care. By increasing availability, the hospital is helping ensure patients can receive timely treatment while staying connected to their support networks at home.

The Surgical Services Program has also seen considerable enhancements and optimization over the last year, resulting in a significant reduction in priority surgical wait times from 72% in 2024/25 to 20% in 2025/26.

These improvements allow patients in our community to access surgery more quickly, improve quality of life, and receive care closer to home.





Recruitment continues to play an important role in growing services. The addition of ophthalmologist Dr. Gaya Sivakumar has strengthened the hospital's ophthalmology program, bringing expanded surgical and emergency eye care services to the community. Dr. Sivakumar performs cataract surgery and other procedures aimed at restoring sight and improving quality of life, while also providing on-call care for urgent eye conditions.

At the same time, STEGH has introduced new life-saving capabilities within its Intensive Care Unit (ICU). The hospital now offers Temporary Transvenous Pacing, an emergency cardiac procedure used to stabilize patients experiencing dangerously slow heart rhythms. Previously, patients requiring this intervention often needed to be transferred to larger centres.

Today, STEGH can provide this critical treatment locally, allowing patients to remain in the community. In fact, a young patient treated late last year benefited directly from this capability - an outcome that may not have been possible without the availability of this intervention at STEGH.

Through strategic recruitment, expanded services, and new clinical capabilities, the hospital continues to strengthen access to high-quality care close to home - ensuring patients and families receive the right care, in the right place, when they need it most.

Tiny Patients, Huge Impact: Donors Advance Neonatal Care at STEGH

For families welcoming a newborn, every moment matters, and so does being able to receive care close to home. This year, community support helped advance a new level of neonatal care at STEGH, allowing more babies to receive the specialized care they need, and peace of mind for their new parents.

Together, across Elgin County, more than \$265,000 was raised through generous donations, with precious little ones in mind. Each gift is a reflection of families, donors, and community partners choosing to invest in the very beginning of life.

Support came in many meaningful ways, from families celebrating births at STEGH to monthly donors continuing their commitment, and community groups such as local Kiwanis Clubs and the Sandra Schmirler Foundation, all stepping forward to help bring this shared achievement to life. For some families, that impact is felt immediately.

These investments have helped advance the NICU from Level 2A to level 2B plus 6 days gestation, expanding STEGH's ability to care for more premature infants, as young as 32 weeks, close to home. For care teams, it means having the right tools in place, including Isolette incubators and a vital new mobile Resuscitaire unit to support newborns in their first critical moments. For families, it means reassurance, connection, and fewer moments spent apart.

Instead of being transferred to another hospital, parents can remain close to their newborn. Families can spend more time at the bedside, participating in care, and focusing on what matters most during those early, critical days.

This is what it looks like when a community comes together, ensuring more babies can begin their story surrounded by care, and close to the people who love them most.

DID YOU KNOW?

Families can celebrate a new arrival with a custom "**Baby Bubble**" through our **Born at STEGH** program.

Since the program began, nearly **110 Baby Bubbles** have been purchased, generating nearly **\$22,000** in support of STEGH's **Women and Children's Unit**.



For more information about the **Born at STEGH** Program:



Hospital Encounters

STEGH Stats April 1, 2025 – March 31, 2026

61,572 visits to our Emergency
Department

101,835
diagnostic
imaging
exams

1,649,541 laboratory tests

833 babies born

10,341 surgical
procedures



Foundation Impact

Foundation Stats April 1, 2025 – March 31, 2026

6,264 Impactful Gifts

245 Dedicated
Monthly Donors

101 Committed Payroll Donors

30 Baby Bubbles
purchased in celebration
of babies born at STEGH



Investing in People, Strengthening Our Culture

At STEGH, we know that strong leadership is key to delivering exceptional care. Over the past year, we have continued to invest intentionally in the development of our people through two initiatives: the Aspiring Leaders Program and the Leader Development Program. Together, these programs are helping build leadership capacity across our organization while supporting a culture where staff feel empowered, supported, and prepared for the future.

The Aspiring Leaders Program is designed for staff who are interested in exploring leadership opportunities and developing the skills needed to take the next step in their careers. Participants engage in structured learning sessions focused on communication, collaboration, decision-making, and leading teams through change.

Complementing this work is the Leader Development Program, which supports individuals currently in leadership roles by providing practical tools, peer learning opportunities, and dedicated time to reflect on leadership practices. The program focuses on building strong, resilient leaders who can guide teams through the evolving challenges of today's health care environment while maintaining a focus on compassionate, patient-centred care.

Together, these programs reflect a broader commitment to leadership development and succession planning at STEGH. By investing in the growth of our people, we are building a strong foundation for the future of our hospital and ensuring that our teams are supported as health care continues to evolve.

This commitment to culture and leadership was recognized beyond our walls last year when STEGH received the Culture Award at the London & District Chamber of Commerce Business Achievement Awards. The award celebrates organizations that prioritize a positive workplace culture and invest meaningfully in their people.

While the recognition was an honour, at STEGH, our culture is built on collaboration, respect, and a shared commitment to supporting one another. By continuing to invest in leadership development, we are strengthening that culture and ensuring that the values that guide our work today will carry us forward into the future.



When Seconds Matter, Our Community Steps Up

Every year, more than 61,000 patients turn to STEGH's Emergency Department when they need care - 24 hours a day, 365 days a year. With increased patient volumes and emerging equipment needs our community responded to strengthen emergency care at STEGH in a meaningful way. Across St. Thomas and Elgin County, donors, partners, and community members came together to support emergency services to ensure STEGH's care teams have what they need when every second counts.

Early momentum made one thing clear: Our community appreciates the accessible, quality local emergency care STEGH is known for. On Giving Tuesday, the volunteer-run **STEGH Auxiliary contributed \$25,000 in support of the Emergency Department**, joined by community partners like McDougall Energy, helping expand the reach and impact of this effort. That momentum carried through the holiday season, with more than \$200,000 raised in support of Emergency Department priorities through year-end giving.

For Paul, a St. Thomas resident, that impact is personal.

"I had a tickle in my throat, and I coughed, and it felt like something had ruptured... so I came in here (to STEGH's Emergency Department) and just like that was treated." When Paul needed emergency care, he was met with quick, skilled support and a team that treated him with compassion and respect. Paul adds, "I need to know that health care is going to be here when I need it. And it is here, this is a good hospital. Thank you to everyone's generosity."



For more information
about Paul's Story:



In a moment that could have been overwhelming, receiving that care close to home made all the difference for Paul. His experience reflects what strong, community-supported care looks like in action.

DID YOU KNOW?

Donor support is strengthening care in STEGH's Emergency Department through:

Advanced patient monitoring

New monitors help care teams assess and respond quickly when conditions change.

Safer treatment for injuries

A specialized cast cutting saw and vacuum system helps reduce skin injury and improve safety.

Improved reception space

Renovations support patient privacy, smoother flow, and a more organized arrival experience.



Funding Healthcare for You

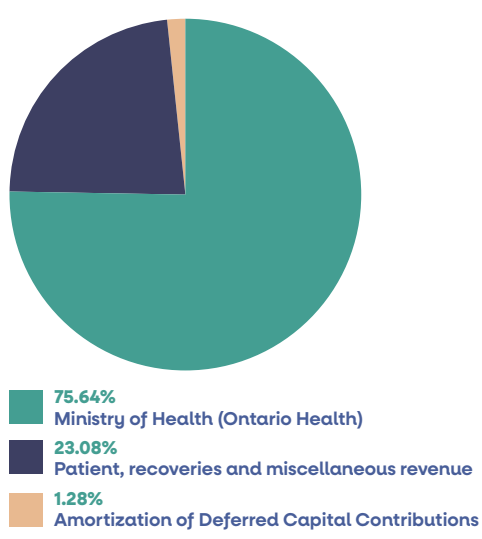
ST. THOMAS ELGIN GENERAL HOSPITAL FINANCIAL STATEMENTS

Summary Statement of Financial Position As of March 31, 2026 (000's)

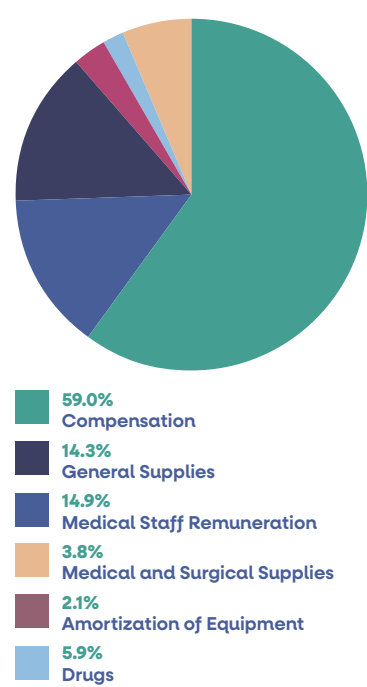
ASSETS:	2026	2025
Current Assets	16,578	18,080
Capital Assets	132,195	131,773
Total	148,773	149,853

LIABILITIES, DEFERRED CONTRIBUTIONS AND NET ASSETS:	2026	2025
Current Liabilities	19,454	18,207
Long-Term Liabilities and Deferred Contributions	112,329	113,826
Unrestricted Net Assets	16,990	17,820
Total	148,773	149,853

Total Revenue by Type
2026 Figures



Operating Expenses
2026 Figures



Summary Statement of Operations

As of March 31, 2026 (000's)

REVENUES:	2026	2025
Ministry of Health	129,388	123,479
Other	39,488	39,155
Total	168,876	162,634

EXPENSES:	2026	2025
Salaries and Benefits	100,688	94,244
Other	67,888	66,022
Total	168,576	160,266

Excess of Revenues over Expenses from Operations	300	2,368
Other Revenue (Expenses)	(1,130)	(1,050)
Excess of Revenue Over Expenses	(830)	1,318

Summary Statement of Cash Flows

As of March 31, 2026 (000's)

CASH PROVIDED BY (Used In):	2026	2025
Operating Activities	1,275	4,412
Financing Activities	4,921	9,826
Investing Activities	(9,487)	(14,008)
Net Decrease in Cash	(3,291)	230
Cash, Beginning of Year	9,599	9,369
Cash, End of Year	6,308	9,599

ST. THOMAS ELGIN GENERAL HOSPITAL FOUNDATION FINANCIAL STATEMENTS

Statement of Fund Operations and Changes in Net Assets As of March 31, 2026

REVENUES:	2026	2025
Individual Giving	647,183	620,183
Planned Giving	1,713,868	791,956
Lottery	691,077	726,997
Campaign	740,806	3,512,825
Community Partnerships	488,730	99,153
Direct Mail	181,955	67,605
Corporate Giving / Foundations	133,699	85,424
Investment Income	133,113	210,246
Total	4,730,431	6,114,389
EXPENDITURES:	2026	2025
Salaries and Wages	673,414	696,724
Lottery Direct Costs	514,434	473,528
Direct Fundraising Costs	125,153	154,940
Indirect Fundraising Costs	265,695	246,458
Total	1,578,696	1,571,650
Excess of Revenues over Expenditures	3,151,735	4,542,739
Net Assets Beginning of Year	3,407,336	3,274,524
Distributions to STEGH	(2,653,430)	(4,409,927)
Net Assets End of the Year	3,905,641	3,407,336

Throughout the 2025-26 fiscal year, donors across the St. Thomas and Elgin community generously supported vital projects at STEGH. As the Foundation transitions from the successful Transforming Tomorrow Diagnostic Imaging Campaign to a broader mix of fundraising programs to support emerging hospital needs, we are grateful for the growing number of monthly donors, corporate partners and transformational legacy donors who are helping redefine the calibre of care we offer at STEGH.

Community Champions

Across St. Thomas and Elgin County, support for STEGH takes many forms. It comes from local businesses, families, volunteers, service clubs, event organizers, donors, and community members who turn their ideas, gratitude, and commitment into meaningful action.

This year, the STEGH Foundation introduced Community Champions, a new feature recognizing individuals and groups whose generosity, leadership, and heart for our hospital reflect the very best of this region.



Brian Lynch and Dr. David Bottoni

Turning Personal Experience into Purpose:

Brian Lynch

As the founder of THE BOTTONI PROJECT, Brian Lynch is the driving force behind THE BOTTONI RIDE, a powerful community initiative inspired by his personal journey as a male breast cancer survivor.

Through his advocacy, leadership, and tireless fundraising, Brian has united riders, supporters, and community partners around a shared goal: increase Male Breast Cancer awareness. **As a result of his efforts, more than \$120,000 has been raised** in support of Diagnostic Imaging and mammography services at STEGH, helping strengthen earlier detection, accurate imaging, and compassionate care for patients across our region.



William Goodman, Karen Davies, STEGH President & CEO,
Christian Reith

Young Leaders Making a Big Impact:

William Goodman and Christian Reith

At just 16 and 18 years old, William Goodman and Christian Reith are the young leaders behind the **Railway City Charity Car Show**, an event that brings together car enthusiasts, local businesses, families, and supporters in support of STEGH.

With support from Dan Reith, Reith & Associates, and Alex Reith serving as treasurer, **the inaugural 2025 event raised more than \$30,000 for patient care**. William and Christian are now building on that success, with the 2nd Annual Railway City Charity Car Show on June 7, 2026.



Barbara Blewett

Remembering a Life of Kindness and Generosity:

Barbara Blewett

Born and raised in Elgin County, Barbara Blewett believed deeply in caring for the community she called home. Alongside her husband, Ted, Barbara lived a life grounded in kindness, generosity, and helping others. Together, Barbara and Ted, along with Barbara's parents, Clara and Ottie Underhill, shared a longstanding connection to STEGH grounded in the belief of supporting local healthcare.

Over the years, the family's generosity helped strengthen care for countless patients and families at STEGH. Most recently, Barbara's **transformational legacy gift** fully funded a new mammography machine, ensuring patients can continue to access enhanced breast imaging close to home for years to come.

The legacy of Barbara, Ted, Clara, and Ottie lives on through every patient who will benefit from this important advancement in care.

Each Community Champion reminds us that a strong hospital is built together. To every individual, business, group, and partner who continues to show up for STEGH, thank you for helping strengthen our hospital for St. Thomas and Elgin County.

Connect With Us



STEGH

Facebook:

@St Thomas Elgin General Hospital
www.facebook.com/St.ThomasElginGeneralHospital

Instagram:

@stegh.cares
www.instagram.com/stegh.cares

LinkedIn:

@St. Thomas Elgin General Hospital
www.linkedin.com/company/st-thomas-elgin-general-hospital



STEGH Foundation

Facebook:

@St Thomas Elgin General Hospital Foundation
www.facebook.com/STEGHFoundation

Instagram:

@STEGHFoundation
www.instagram.com/steghfoundation

LinkedIn:

@St Thomas Elgin General Hospital Foundation
www.linkedin.com/company/stegh-foundation