

Facts & Stats

Fiscal Year 2025-26



About St. Thomas Elgin General Hospital

St. Thomas Elgin General Hospital (STEGH) is a fully accredited hospital dedicated to serving the City of St. Thomas and the seven municipalities across the County of Elgin. With over 70 years of history and a strong legacy of community service, STEGH offers a comprehensive range of services, including outpatient care, diagnostic imaging, inpatient acute care, emergency services, post-acute care, and regional satellite programs. Committed to achieving the best possible health outcomes for our patients, we continuously explore innovative approaches to service delivery, patient engagement, workforce development, and collaboration with healthcare partners.

Strengthening Care Through Innovation and Partnership

At St. Thomas Elgin General Hospital, we are continually evolving to meet the changing needs of our community. From expanding access to specialized services and advancing diagnostic technology, to strengthening partnerships across the region, our focus is on delivering high-quality care close to home. Guided by a commitment to excellence, collaboration, and patient-centred care, we are building a stronger, more connected healthcare experience for the people we serve.

OUR MISSION
CARING
HEALING
CONNECTING

RESPECT

COMPASSION

COLLABORATION

OUR VISION
Together, creating
health care excellence
for our community.

St. Thomas Elgin
General Hospital

ACCOUNTABILITY

INNOVATION

Our Teams



Staff - 1,095



Physicians - 275
(including dentists and midwives)



Volunteers - 75

Inpatient Beds



Beds - 179

85 Acute Care	8 Integrated Stroke Care
34 Continuing Care	7 General Rehab
15 Mental Health	6 Pediatrics
14 Intensive Care	6 Labour & Delivery
	4 Neonatal Intensive Care

Patient Services

- Emergency Care
- Medical Care
- Surgical Services
- Intensive Care
- Maternal and Child Care
- Complex Continuing Care
- Rehabilitation
- Chemotherapy
- Palliative Care
- Mental Health
- Diagnostic Imaging
- Laboratory Services
- Ambulatory Clinics
- Integrated Stroke Unit

Statistics



Births
833



Diagnostic Imaging
101,835 exams



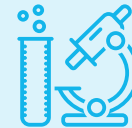
Surgery
10,341 procedures



Emergency visits
61,572



Average length of stay
4 days



Laboratory
1,649,541 tests



**Ambulatory/
Outpatient Clinics**
19,150 visits



**Chemotherapy
treatment visits**
2,486



**Mental Health
Outpatient Clinics**
11,922 visits

Contact Us

Communications and Engagement
189 Elm Street
St. Thomas, ON N5R 5C4
519-631-2030, Ext. 2354 / www.stegh.on.ca

Engage with Us

