



St. Thomas Elgin
General Hospital

Facts & Stats

Fiscal Year 2024-25



About St. Thomas Elgin General Hospital

St. Thomas Elgin General Hospital (STEGH) is a fully accredited hospital dedicated to serving the City of St. Thomas and the seven municipalities across the County of Elgin. With over 70 years of history and a strong legacy of community service, STEGH offers a comprehensive range of services, including outpatient care, diagnostic imaging, inpatient acute care, emergency services, post-acute care, and regional satellite programs. Committed to achieving the best possible health outcomes for our patients, we continuously explore innovative approaches to service delivery, patient engagement, workforce development, and collaboration with healthcare partners.

Embracing a Culture of Compassion and Care



At St. Thomas Elgin General Hospital, our unique culture is the heartbeat of our organization, driven by a shared commitment to compassion, respect, and exceptional care. Through small but meaningful gestures and a focus on diversity, equity, and inclusion, we create an environment where every individual feels valued and supported. We're proud of the warm, welcoming community we've built, where kindness and empathy define every interaction.



COMPASSION

OUR
MISSION
CARING
HEALING
CONNECTING

RESPECT

COLLABORATION

OUR
VISION

Together, creating
health care excellence
for our community.

St. Thomas Elgin
General Hospital



INNOVATION



ACCOUNTABILITY

Our Teams



Staff - 1,087



Physicians - 220
(including dentists and midwives)



Volunteers - 75

Inpatient Beds



Beds - 179

85	Acute Care	8	Integrated Stroke Care
34	Continuing Care	7	General Rehab
15	Mental Health	6	Pediatrics
14	Intensive Care	6	Labour & Delivery
		4	Neonatal Intensive Care

Patient Services

- Emergency Care
- Medical Care
- Surgical Services
- Intensive Care
- Maternal and Child Care
- Complex Continuing Care
- Rehabilitation
- Chemotherapy
- Palliative Care
- Mental Health
- Diagnostic Imaging
- Laboratory Services
- Ambulatory Clinics
- Integrated Stroke Unit

Statistics



Births
781



Diagnostic Imaging
94,723 exams



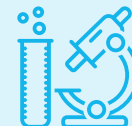
Surgery
10,113 procedures



Emergency visits
62,762



Average length of stay
3.8 days



Laboratory
1,972,774 tests



**Ambulatory/
Outpatient Clinics**
19,020 visits



**Chemotherapy
treatment visits**
2,054



**Mental Health
Outpatient Clinics**
10,220 visits

Contact Us

Communications and Engagement
189 Elm Street
St. Thomas, ON N5R 5C4
519-631-2030, Ext. 2354 / www.stegh.on.ca

Engage with Us

