



Facts & Stats

Fiscal Year 2023-24



About St. Thomas Elgin General Hospital

St. Thomas Elgin General Hospital (STEGH) is a fully accredited hospital serving the City of St. Thomas and all seven municipalities within the County of Elgin. We have a proud history and legacy in the community with almost 70 years of service. STEGH offers a full range of services, including: outpatient care, diagnostic imaging, inpatient acute care, emergency services, post-acute care, and regional satellite services.

To achieve the best health outcomes for patients, STEGH continually seeks innovative ways to deliver services, engage with patients and the community, invest in its people, and collaborate with health care partners.

Prioritizing Wellness and Empowering Our Teams

In our hospital, we understand that our greatest asset is our staff. That's why we prioritize staff wellness as a fundamental aspect of our culture. From comprehensive wellness programs to supportive resources, we're dedicated to ensuring that every member of our team feels valued, supported, and empowered to thrive both personally and professionally.



In addition to corporate initiatives like on-unit stretch breaks, mindfulness sessions, yoga, running programs, and therapy dog visits, our commitment to staff wellness extends to personalized support and resources. Whether it's access to mental health counseling or wellness workshops, we strive to meet the diverse needs of our staff. By investing in the well-being of our team members, we create a healthier, happier workplace where everyone can thrive and deliver exceptional care to our patients.

Supporting Patients with Low Vision or Vision Impairments



STEGH is first hospital in the region to implement the Checkered Eye project in support of patients with low vision or vision impairments. Outpatients have the option of wearing a Checkered Eye when they arrive at registration areas in the hospital. The symbol alerts the health care team that the patient is on the spectrum of blindness and allows the team to make accommodations as needed. For inpatients, the symbol is posted on the communication board in their room.

Our Teams



Staff - 1,085



Physicians - 230
(including dentists and midwives)



Volunteers - 81

Inpatient Beds



Beds - 179

85 Acute Care	8 Integrated Stroke Care
34 Continuing Care	7 General Rehab
15 Mental Health	6 Pediatrics
14 Intensive Care	6 Labour & Delivery
	4 Neonatal Intensive Care

Patient Services

- Emergency Care
- Medical Care
- Surgical Services
- Intensive Care
- Maternal and Child Care
- Complex Continuing Care
- Rehabilitation
- Chemotherapy
- Palliative Care
- Mental Health
- Diagnostic Imaging
- Laboratory Services
- Ambulatory Clinics
- Integrated Stroke Unit

Statistics



Births
831



Diagnostic Imaging
87,617 exams



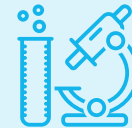
Surgery
9,850 procedures



Emergency visits
59,718



Average length of stay
3.9 days



Laboratory
1,939,216 tests



**Ambulatory/
Outpatient Clinics**
19,467 visits



**Chemotherapy
treatment visits**
2,091



**Mental Health
Outpatient Clinics**
11,898 visits

Contact Us

Communications and Engagement
189 Elm Street
St. Thomas, ON N5R 5C4
519-631-2030, Ext. 2354 / www.stegh.on.ca

Follow Us

