

Facts & Stats

2022

About St. Thomas Elgin General Hospital

St. Thomas Elgin General Hospital (STEGH) is a fully accredited hospital serving the City of St. Thomas and all seven municipalities within the County of Elgin. We have a proud history and legacy in the community with over 68 years of service. STEGH offers a full range of services, including: outpatient care, diagnostic imaging, inpatient acute care, emergency services, post-acute care, and regional satellite services.

To achieve the best health outcomes for patients, STEGH continually seeks innovative ways to deliver services, engage with patients and the community, invest in its people, and collaborate with health care partners.

Cancer Care Close to Home

The Chemotherapy Unit at STEGH is a satellite clinic of the London Regional Cancer Program (LRCP) at London Health Sciences Centre. It enables clients from St. Thomas and Elgin County to receive cancer treatments close to home when possible. Patients are initially assessed at LRCP and then referred back to the Chemotherapy Unit at STEGH.

The Unit provides outpatient chemotherapy treatment and follow-up by a team of highly skilled physicians, registered nurses and pharmacists.

Last summer, the Chemotherapy Unit moved into a newly renovated space in the hospital. The space offers patients a more relaxing and private environment to receive treatment, and brings the Chemotherapy team closer to support departments, such as Pharmacy, the Lab, and Diagnostic Imaging.



Specialized Care for our Tiniest Patients

Babies are admitted to the Neonatal Intensive Care Unit (NICU) for specialized medical and nursing care. The goal is to provide the best possible care so the baby can be discharged home as soon as possible. The NICU is a Level 2 Nursery, which means babies are medically stable, but may still need temporary breathing support or low flow oxygen.

Our Teams



Staff - 983



Physicians - 230
(including dentists and midwives)



Volunteers - 81

Inpatient Beds



Beds - 179

85	Acute Care	8	Integrated Stroke Care
34	Continuing Care	7	General Rehab
15	Mental Health	6	Pediatrics
14	Intensive Care	6	Labour & Delivery
		4	Neonatal Intensive Care

Patient Services

- Emergency Care
- Medical Care
- Surgical Services
- Intensive Care
- Maternal and Child Care
- Complex Continuing Care
- Rehabilitation
- Chemotherapy and Cancer Care
- Palliative Care
- Mental Health
- Diagnostic Imaging
- Laboratory Services
- Ambulatory Clinics
- Integrated Stroke Unit

Statistics



Births
716



Diagnostic Imaging
79,759 exams



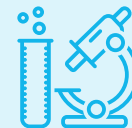
Surgery
8,470 procedures



Emergency visits
54,735



Average length of stay
4.3 days



Laboratory
1,885,880 tests



**Ambulatory/
Outpatient Clinics**
17,506 visits



**Chemotherapy
treatment visits**
2,186



**Mental Health
Outpatient Clinics**
13,220 visits

Contact Us

Communications and Engagement
189 Elm Street
St. Thomas, ON N5R 5C4
519-631-2030, Ext. 2354 / www.stegh.on.ca

Follow Us

